

NEW

GEMweb[®] Plus⁵⁰⁰
CUSTOM CONNECTIVITY

Management and compliance simplified



Simplify and centralize POCT operations

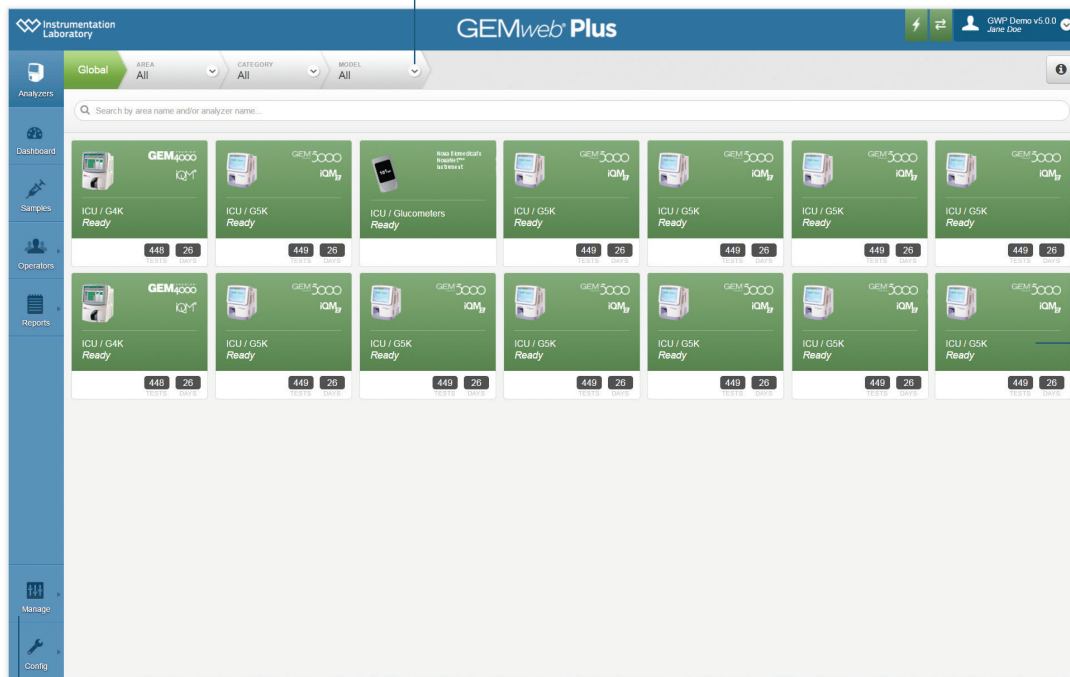
Access all data from a single dashboard,
enhancing patient safety, quality management
and compliance.



Data from networked GEM Premier analyzers can be accessed
from any analyzer, PC or tablet device.

Combines control of information, analyzers and operators into one easy-to-use package

Established View Filters



Enhanced Analyzer Tiles

Intuitive Dashboard Menu

Simplify POCT

- Simple web access from any browser
- User interface optimized for access from analyzer, PC and tablet device screens
- Easy at-a-glance dashboard
- Real-time remote control: full access to analyzer configuration without testing interruption
- Total automated control of operators with multi-level authorization and traceability of users, actions and competence

Centralize POCT

- Single unified database to access patient samples and historical results
- Data connection to iQM® on GEM® Premier™ 3500 and 4000 systems
- Data connection to iQM2 on GEM Premier 5000 systems
- Customizable to multiple connection types, including patient monitors, EHR and ADT
- Open connectivity, including analyzers from non-IL manufacturers

GEMweb Plus 500 Custom Connectivity—oversight and performance enhanced.

Seamless and centralized

Designed to simplify operator support, full traceability, all from a single interface at the point-of-care or remotely from

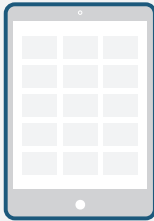


Centralized Management

Central Laboratory/
POC Supervisor



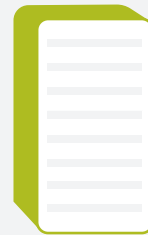
Access from any device



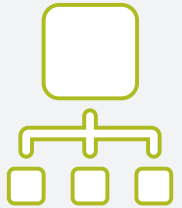
Remote control of analyzers in the network



Seamless Data Integration



HIS/LIS/EMR

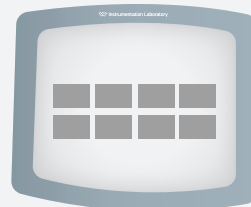


Single unified database



Simplified Point-of-care

Operator



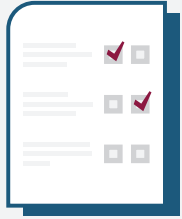
Remote access and control of GEM systems from GEM systems



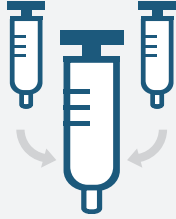
Access complete patient history

for simplified management

revision, quality management and
e, whether accessed in the central lab,
m an analyzer, PC or tablet device.



Enhanced reports
and audit logs



Centralized sample
database



Centralized
configuration



Multi-level operator access
and automatic certification



Automatic
iQM/iQM2 reports



Order download



Open connectivity
to non-IL devices



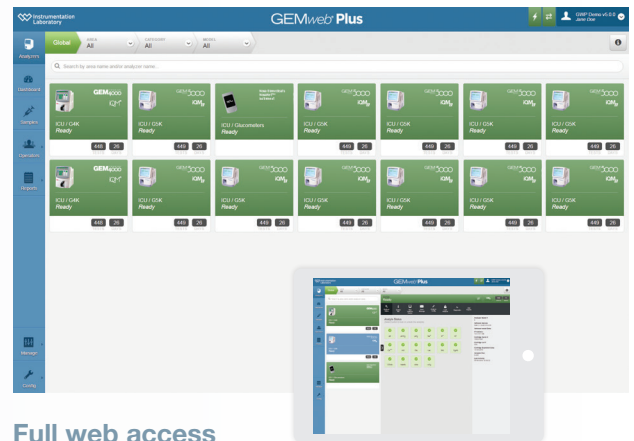
Operator certification

A comprehensive management system. Plus.

No other data management system offers so many automated features. Operators are able to check and configure analyzers without interrupting testing operations. This ultimately saves staff time.

Remote oversight of analyzer status, from anywhere

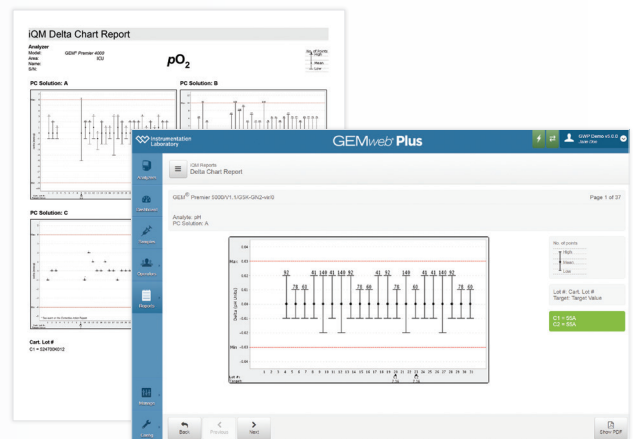
- Simplicity with new single user interface, optimized for analyzer, PC and tablet device screens
- Full access from all networked GEM Premier 4000 and 5000 systems
- Full remote configuration with Global, Area and Single Analyzer options
- Simple and intuitive, no training or dedicated devices required



Full web access

Monitor quality management anytime, anywhere

- iQM and iQM2 auto-detect, correct and document corrective actions in real-time, with no user intervention
- iQM and iQM2 data from all instruments available from a single screen



iQM and iQM2 access

Unprecedented flexibility for managing all operations

Automates operator management, activity and documentation for total traceability. It's a complete quality management system that helps achieve and maintain compliance accreditation and certification standards.

Complete, customized operator certification and management

- Total automated control of operators with multi-level authorization and traceability of users, actions and competence
- Access to analyzers and patient sampling limited to certified operators only
- Fully customizable



Automated multi-level access and operator certification

Automated traceability and documentation of all activity

- Automated quality controls and corrective actions through iQM
- Analytical activity
- Operator performance and workload
- Patient sample display and management
- Real-time, hospital-wide patient histories—accessible with one click from the sample results screen
- Operator logins, configuration and security-management changes

Audit Log Report - Patient Record Amendment Summary Log

Patient ID	First Name	Last Name	Analyst/Analysed	Modified Date/Time	Modifies Date/Time	Amending Operator	Access Point	Modified Field	From	To
29									10	11
15									12	11

Sample Counters - Device Workload Report

Area Summary - CR	Sample Type	09:00	17:00	09:00	03	03	Total
Arterial		2331	212	2	4254	2	1000
Capillary		247	42	0	242	1	48
Total		2488	255	2	2488	3	2548

Area Detail - CR

Analysed	Analysed Date/Time	Analysed	Analysed Date/Time	Sample Type	09:00	17:00	09:00	03	03	Total
Model	Q219	Model	Q219	Arterial	1	0	0	1	0	1
Area	000000	Area	000000	Total	1	0	0	1	0	1
Model	Q219	Model	Q219	Arterial	18	0	1	18	0	19
Area	000000	Area	000000	Total	18	0	1	18	0	19
Model	Q219	Model	Q219	Arterial	18	0	1	18	0	19
Area	000000	Area	000000	Total	18	0	1	18	0	19
Model	Q219	Model	Q219	Arterial	112	0	0	110	0	212
Area	000000	Area	000000	Total	112	0	0	110	0	212
Model	Q219	Model	Q219	Arterial	120	10	0	124	0	139
Area	000000	Area	000000	Capillary	11	0	0	11	0	21
Model	Q219	Model	Q219	Total	131	10	0	142	0	160
Area	000000	Area	000000	Total	131	10	0	142	0	160
Model	Q219	Model	Q219	Arterial	105	2	0	142	0	147
Area	000000	Area	000000	Capillary	11	0	0	11	0	21
Model	Q219	Model	Q219	Total	116	2	0	153	0	168
Area	000000	Area	000000	Total	116	2	0	153	0	168
Model	Q219	Model	Q219	Arterial	165	10	0	165	0	277
Area	000000	Area	000000	Capillary	11	0	0	11	0	21
Model	Q219	Model	Q219	Total	176	10	0	176	0	298
Area	000000	Area	000000	Total	176	10	0	176	0	298

Extensive traceability and documentation

GEMweb Plus 500 Custom Connectivity—management and compliance simplified.

Enhance patient safety, quality management and compliance

GEMweb Plus 500 Custom Connectivity provides customizable connectivity and automated functionality for complete control of analyzers, operators and data oversight.



Werfen

Corporate Headquarters

Plaza de Europa, 21-23
08908 L'Hospitalet de Llobregat
Barcelona, Spain
+34-93-4010101
werfen.com

Instrumentation Laboratory Headquarters

180 Hartwell Road
Bedford, MA 01730 USA
+1-781-861-0710
instrumentationlaboratory.com

Worldwide Locations

The Americas

Brazil
São Paulo
+55-11-46227878
br.werfen.com

Canada
Richmond Hill, ON
+1-800-552-2025 x6115
instrumentationlaboratory.com

Colombia
Bogotá
+57 15 221 052

Mexico
Mexico City
+52-55-5262-1760
mx.werfen.com

Uruguay
Montevideo
+5982-481-81-33

USA
Bedford, MA
+1-781-861-0710
instrumentationlaboratory.com

Asia-Pacific

Australia
Sydney
+61-02-9098-0200
au.werfen.com

China
Beijing
+86-10-59756055
Hong Kong
+852-2792-7773
Shanghai
+86-21-66308671
cn.werfen.com

India
New Delhi
+91-490-29-550
in.ilwerfen.com

Japan
Tokyo
+81-3-5419-1301
jp.werfen.com

Korea
Seoul
+82-1899-9217
kr.werfen.com

Thailand
Bangkok
+66-271-226-28/9

Europe

Austria
Vienna
+43-1-256-58-000
at.werfen.com

Belgium
Brussels
+32-2-7252052
benelux.werfen.com

Czech Republic
Prague
+420-246-090-931
cz.werfen.com

France
Paris
+33-182-30-86-00
fr.werfen.com

Germany
Munich
+49-89-909070
de.werfen.com

Hungary
Budapest
+36-1-882-73-10
hu.werfen.com

Italy
Milan
+39-02-25221
it.werfen.com

Lithuania
Kaunas
+370-37-313157
lt.werfen.com

The Netherlands
Breda
+31-76-5480100
benelux.werfen.com

Poland
Warsaw
+48-22-336-18-00

Portugal
Lisbon
+351-214247312
pt.werfen.com

Russia
Moscow
+7-499-124-45-59
ru.ilwerfen.com

Spain
Barcelona
+34-902-20-30-90
es.werfen.com

UK
Warrington, England
+44-1925-810141
uk.werfen.com

For all other countries visit
international.werfen.com

CODE